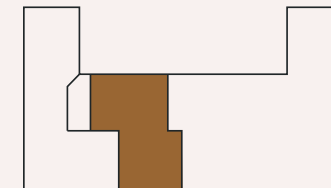
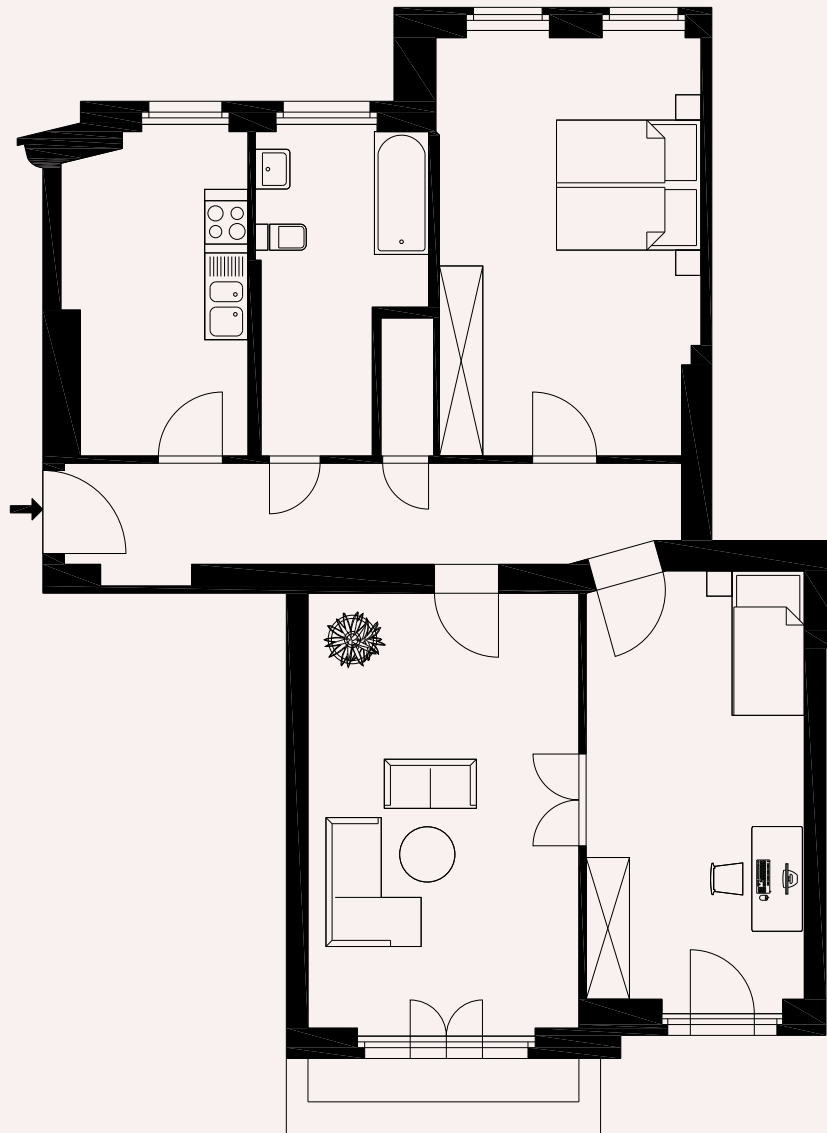


WE 27

95,86 m²*

| | |
|-------------|----------------------------|
| Hauseingang | Chodowiecki 2 ₂ |
| Etage | 4. OG |
| Zimmer | 3 |
| Balkon | Ja |
| Zustand | renovierungsbedürftig |
| Bodenbelag | Dielen |
| Heizung | Gas-Etage |
| Fenster | Holz/Kunststoff |
| Raumhöhe | ca. 3,25 Meter |
| Wohngeld | 266,79 €/Monat |
| Status | verfügbar |



CHODOWIECKISTRASSE

