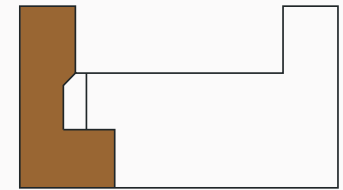
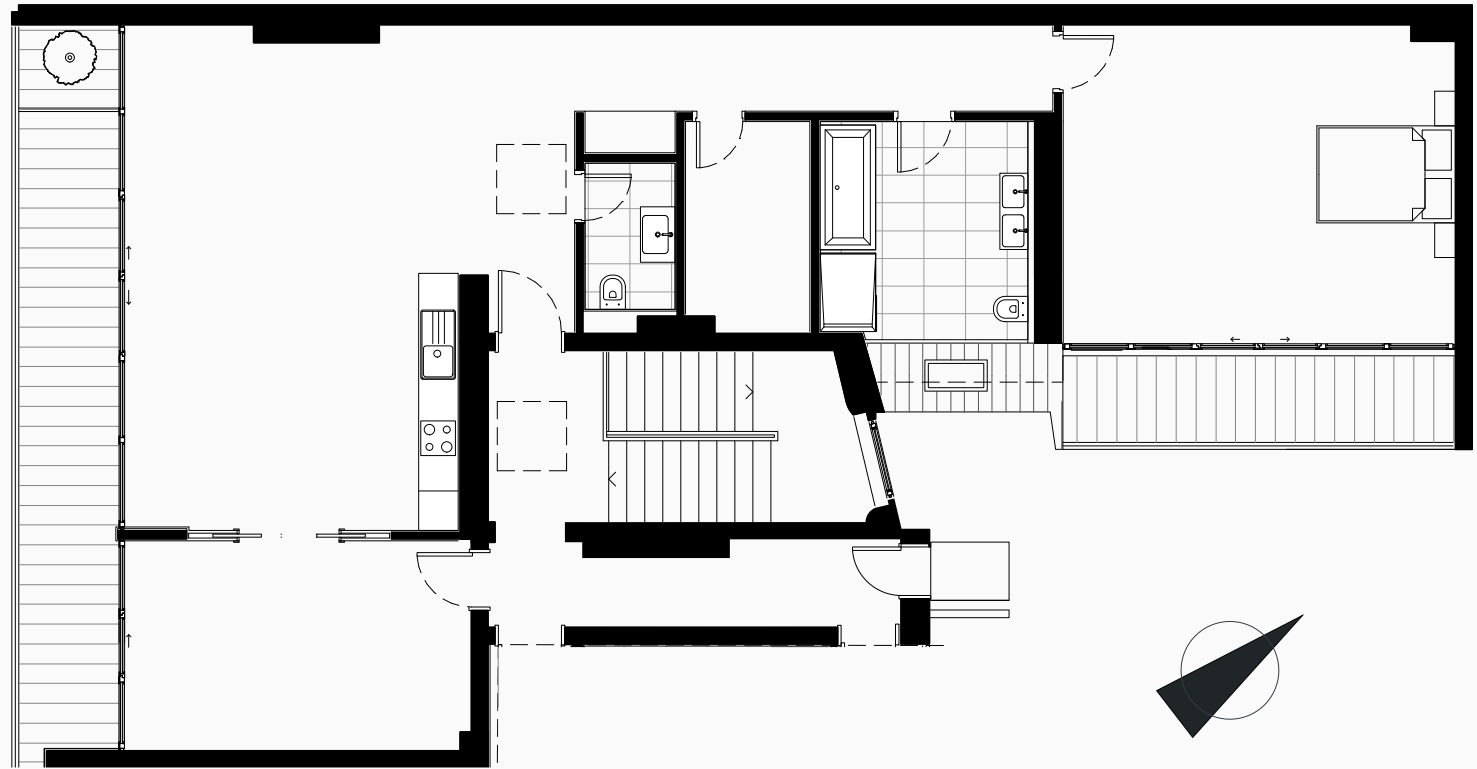


PH 01

119,75 m²*

Arbeitszimmer	14,8 m ²
Wohnküche	34,7 m ²
WC	2,7 m ²
HWR/Technik	5,3 m ²
Bad/WC	9,0 m ²
Schlafzimmer	26,5 m ²
Flur	16,0 m ²
Balkon Straße (Süd)	15,5 m ²
Balkon Hof (Ost)	8,0 m ²



CHODOWIECKISTRASSE